

ABENAKI. C. M.

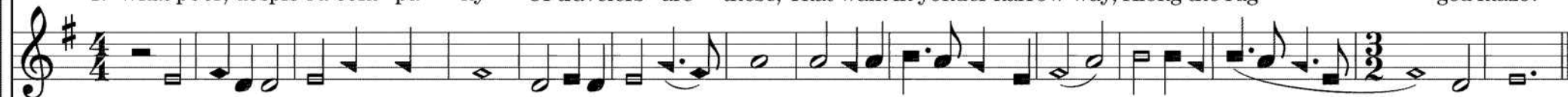
381

E Minor. Maxwell's *Hymns and Spiritual Songs*, 1759.

Thomas Malone, 2010.



1. What poor, despis-ed com - pa - ny Of travelers are these, That walk in yonder narrow way, Along the rug - - - ged maze?



2. Ah, they are of a roy - al line, All children of a King; Heirs of immortal crowns divine, And loud for joy they sing.

