

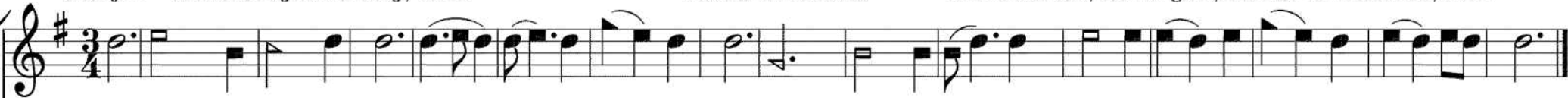
# CONSTRAINED BY LOVE. S. M.

363

G Major. Smith's *Pilgrim's Song*, 1814.

*Teacher's Farewell.*

Arr. Hoboken, Ga. singers; transcr. D. L. Hunter, 2012.



1. Con-strain'd by love, we come Down to the wa-ter's side, To im - i - tate God's on - ly Son, The Christian's on - ly guide.



2. He has com-manded us To be bap-tized with him, And cheerful-ly we bear the cross, Re-nouncing ev - 'ry sin.



3. As ser-vants here we sing, And that with joy of heart; We have be-liev'd, and will o - bey, O God, thy grace im - part!